



Profit from the Eagle Advantage®

Specification Sheet

Short Form Specifications

Eagle Hot Food Tables, open base design, model_____. Top and body to be heavy gauge type 430 stainless steel. Beaded top openings to be 12½" x 20½". Heating compartments to be 8"-deep, galvanized, and insulated on all four sides and bottom with 1" fiberglass or equal. Recessed control panel, with individual infinite controls, offer high and low settings. Each compartment fitted with 500-watt heating element for 120-volt units, and 750-watt heating element for 240-volt units. Six foot cord and plug extends from the bottom right hand side of the unit (not available on 208V/240V 3-phase units). Furnish with polycarbonate cutting board. Legs to be 1½" O.D. tubing, with adjustable undershelf and adjustable bullet feet.



#DHT3-120 hot food table

Options / Accessories

- Spillage pans
- Bolted-in undershelf
- Overshelves
- Tray slides
- Tray shelf
- Dish shelf
- Rolltop cover
- Hardwood cutting board

EAGLE GROUP
100 Industrial Boulevard, Clayton, DE 19938-8903 USA
Phone: 302-653-3000 • Fax: 302-653-2065
www.eaglegrp.com

Foodservice Division: Phone 800-441-8440
MHC/Retail Display Divisions: Phone 800-637-5100

For custom configuration or fabrication needs, contact our **SpecFAB® Division**.
Phone: 302-653-3000 • Fax: 302-653-3091 • e-mail: specfab@eaglegrp.com

Item No.: _____
 Project No.: _____
 S.I.S. No.: _____

Electric Hot Food Tables— Open Base, Stationary

MODELS:

- DHT2-120
- DHT2-240
- DHT3-120
- DHT3-240
- DHT4-120
- DHT4-240
- DHT5-240
- SDHT2-120
- SDHT2-240
- SDHT3-120
- SDHT3-240
- SDHT4-120
- SDHT4-240
- SDHT5-240

Construction

- Table body and top are constructed of highly polished 22 gauge 430 series stainless steel.
- Top features die stamped beaded openings measuring 12½" x 20½" (307 x 510mm).
- A poly cutting board, 8" (203mm) wide and ½" (13mm) thick, is mounted on stainless steel brackets located on control side of unit.
- Legs offered in galvanized or stainless steel.
- All models are 30½" (774mm) wide and 34" (863mm) high.

Controls

- Individual infinite controls offer high and low selections along with eight other temperature settings.
- Indicator light remains on continuously while control is in "ON" position.

Heat compartments

- Each heat compartment is 8" (203mm) deep and lined with 22 gauge galvanized steel.
- Each compartment is insulated on all four sides and bottom with 1" (25mm) thick fiberglass or equal.

Electrical

- Each compartment is fitted with a 500-watt or 750-watt tubular element above the insulated bottom. 500-watt element is standard on units wired for 110-120 volts; 750-watt element is standard for units wired for 220-240 volts.
- A six-foot (1829mm) cord with plug will extend from the bottom of the right hand control side as standard equipment.
- All models are single phase. Three-phase available for 240-volt models only (not supplied with cord and plug). To order, add suffix "-3". Example: DHT2-240-3

Certifications / Approvals



New York MEA 376-84-E

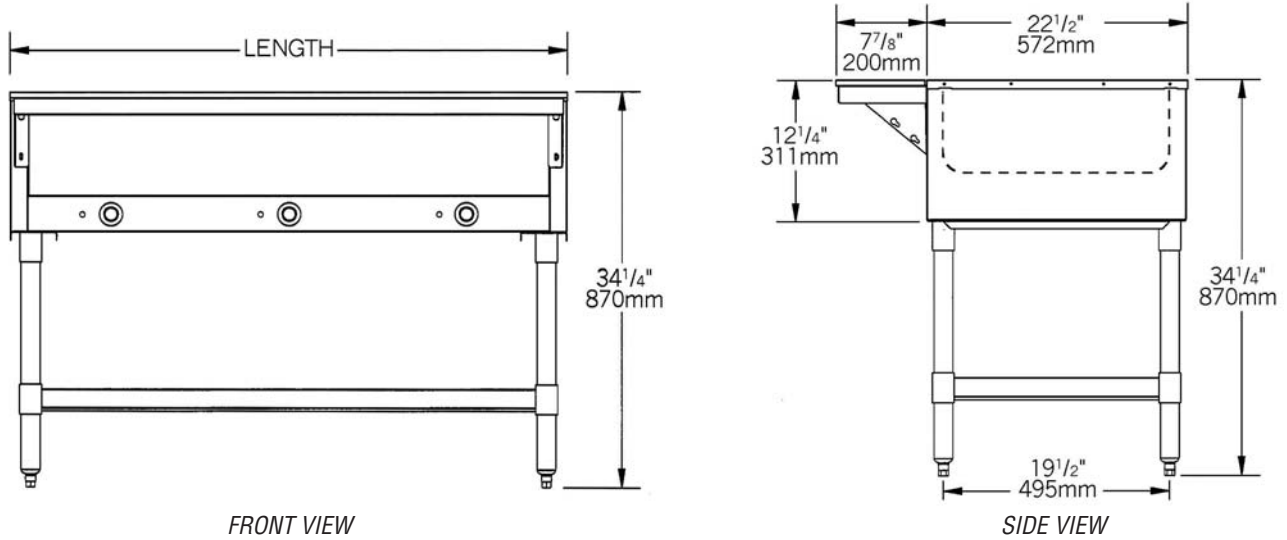




Profit from the Eagle Advantage®

Item No.: _____
 Project No.: _____
 S.I.S. No.: _____

Electric Hot Food Tables—Open Base, Stationary



WITH GALVANIZED LEGS & UNDERSHELF model #	WITH STAINLESS STEEL LEGS & UNDERSHELF model #	# of openings	electrical data	length in. mm	weight lbs. kg
DHT2-120	SDHT2-120	2	1000W, 120V	33" 838	97 44.0
DHT2-240*	SDHT2-240*	2	1500W, 240V	33" 838	97 44.0
DHT3-120	SDHT3-120	3	1500W, 120V	48" 1219	125 56.7
DHT3-240*	SDHT3-240*	3	2250W, 240V	48" 1219	125 56.7
DHT4-120	SDHT4-120	4	2000W, 120V	63 1/2" 1613	158 71.7
DHT4-240*	SDHT4-240*	4	3000W, 240V	63 1/2" 1613	158 71.7
DHT5-240*	SDHT5-240*	5	3750W, 240V	79" 2007	193 87.5

* Also available in 208 volt. To order, replace suffix "-240" with suffix "-208". Example: DHT3-208

Receptacle configurations required

15 AMP 125V	15 AMP 250V	20 AMP 250V	30 AMP 250V	30 AMP 125V
model # DHT2-120 SDHT2-120	model # DHT2-240 SDHT2-240	model # DHT4-240 SDHT4-240	model # DHT5-240 SDHT5-240	model # DHT4-120 SDHT4-120
DHT3-120 SDHT3-120	DHT3-240 SDHT3-240			
furnished with NEMA 5-15 plug	furnished with NEMA 6-15 plug	furnished with NEMA 6-20 plug	furnished with NEMA 6-30 plug	furnished with NEMA 5-30 plug

EAGLE GROUP
 100 Industrial Boulevard, Clayton, DE 19938-8903 USA
 Phone: 302-653-3000 • Fax: 302-653-2065
 www.eaglegrp.com

Foodservice Division: Phone 800-441-8440
 MHC/Retail Display Divisions: Phone 800-637-5100

Printed in U.S.A.
 ©2008 by Eagle Group

Rev. 08/08

Spec sheets available for viewing, printing or downloading from our online literature library at www.eaglegrp.com

Although every attempt has been made to ensure the accuracy of the information provided, we cannot be held responsible for typographical or printing errors. Information and specifications are subject to change without notice. Please confirm at time of order.