

Refrigerated Self-Service Case



MODEL SHOWN: CO4778R

NOTE: SHOWN W/OPTIONAL Q4296 LAMINATED END PANEL EDGE & STRAIGHT HEADER

- CO3678R 36 1/4"L x 33 1/4"D x 81"H
- CO4778R 47 1/4"L x 33 1/4"D x 81"H
- CO5978R 59 1/4"L x 33 1/4"D x 81"H
- CO7178R 71 1/4"L x 33 1/4"D x 81"H

NOTE: Roll Down Security Cover Option Increases Height of Case by 7"

STANDARD FEATURES

- Compressor air-Compressor air front intake, rear discharge. Front panel cannot be blocked. Must remain 4 in. from wall
- Temp-Integrated average product temperature of 41°F
- Light-T-8 top light(s)
- Evaporator pan-Electric condensate pan (self-contained refig. only)
- Warranty-One year parts & labor; 1-5 year compressor warranty
- Deck-Removable deck pans provide complete access to evaporator coil & refrigeration connections
- Shelves-Shelving removable and adjustable on 1" centers
- Base-Casters

	STANDARD SPECIFICATION	OPTION(s)
END PANEL COLOR	<input type="checkbox"/> Black exterior	<input type="checkbox"/> Laminated exterior (Wilsonart/Formica premium) <input type="checkbox"/> Laminated exterior (Wilsonart/Formica non-premium) <input type="checkbox"/> Stainless steel exterior
END PANEL EDGE	<input type="checkbox"/> Vinyl end panel edge (matches interior color)	<input type="checkbox"/> Laminated end panel edge (Q4296)
LOWER FRONT PANEL COLOR	<input type="checkbox"/> Black exterior	<input type="checkbox"/> White exterior <input type="checkbox"/> Stainless steel exterior
MISCELLANEOUS	<input type="checkbox"/> None	<input type="checkbox"/> Clean Sweep® coil cleaner
UPPER FRONT PANEL COLOR	<input type="checkbox"/> Black exterior	<input type="checkbox"/> Painted exterior (specify color) <input type="checkbox"/> Laminated exterior (Wilsonart/Formica premium) <input type="checkbox"/> Laminated exterior (Wilsonart/Formica non-premium) <input type="checkbox"/> Stainless steel exterior
UPPER FRONT PANEL STYLE	<input type="checkbox"/> Flat front panel	<input type="checkbox"/> Formed ABS (painted)
UPPER REAR	<input type="checkbox"/> Solid back panel, galvanized	<input type="checkbox"/> Solid back panel, stainless steel <input type="checkbox"/> Solid rear swinging door(s) w/lock <input type="checkbox"/> Solid back panel, black
INTERIOR COLOR	<input type="checkbox"/> Black interior	<input type="checkbox"/> White interior <input type="checkbox"/> Stainless steel interior
COVER/CURTAIN	<input type="checkbox"/> None	<input type="checkbox"/> Solid security cover, removable, locking <input type="checkbox"/> Roll down security cover, locking (inc. ht. 7") <input type="checkbox"/> Night curtain, retractable, non-locking
REFRIGERATION	<input type="checkbox"/> Breeze™ refrigeration	<input type="checkbox"/> EnergyWise refrigeration <input type="checkbox"/> Whisper Cool compressor blanket (Breeze only) <input type="checkbox"/> Note: Remote doesn't incl Conds unit. Floor drain reqd. <input type="checkbox"/> Remote w/thermostat, solenoid & TXV <input type="checkbox"/> Breeze-E refrigeration <input type="checkbox"/> Remote w/TXV
END PANEL LEFT	<input type="checkbox"/> Full end panel w/mirror interior	<input type="checkbox"/> Cutaway end panel <input type="checkbox"/> Counter cutaway end panel (Q4292)
END PANEL RIGHT	<input type="checkbox"/> Full end panel w/mirror interior	<input type="checkbox"/> Cutaway end panel <input type="checkbox"/> Counter cutaway end panel (Q4292)
SHELVING	<input type="checkbox"/> Solid shelves, non-lighted	<input type="checkbox"/> No lip shelves (Q4328), non-lighted (up to 5) <input type="checkbox"/> Additional solid shelf, lighted (LED) <input type="checkbox"/> Solid shelves, lighted (LED) <input type="checkbox"/> Additional solid shelf, lighted (T-8) <input type="checkbox"/> Additional solid shelf, non-lighted <input type="checkbox"/> Solid shelves, lighted (T-8)
BUMPER	<input type="checkbox"/> None	<input type="checkbox"/> 2" bumper on front (specify color)

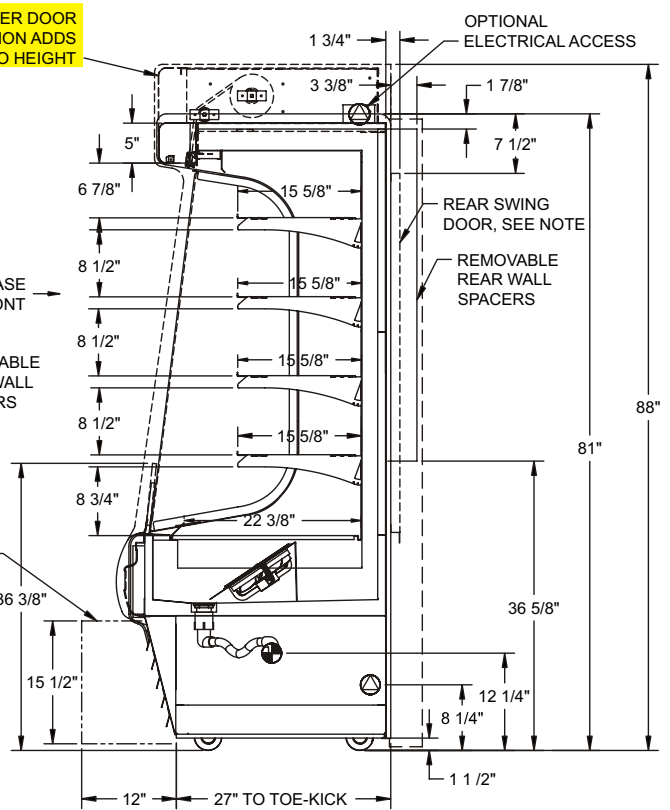
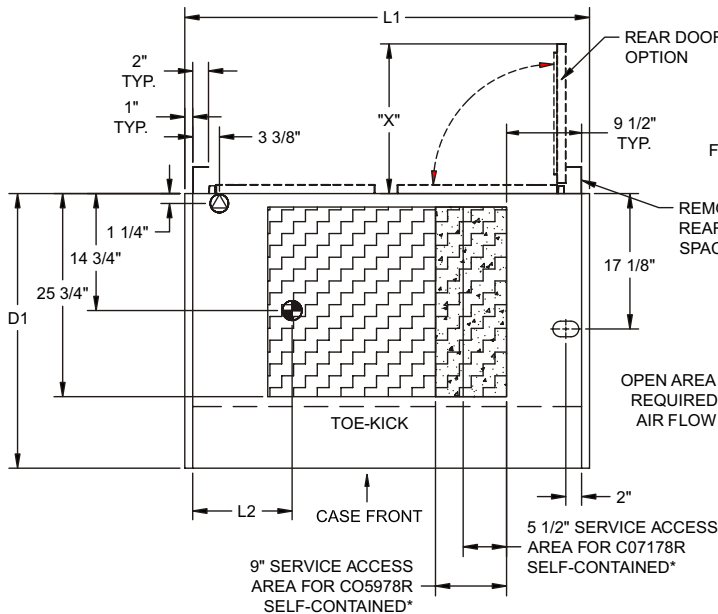
## PRODUCT SPECIFICATIONS

Intended Use of Display Area: Packaged refrigerated products  
 Integrated Product Temperature (IPT): 41°F  
 Intended Environment: Designed to operate in ambient conditions of 75°F / 55% relative humidity.

### PLAN VIEW

### SIDE VIEW

NOTE: CO3678R - (X) = 30" - (1) DOOR RH HINGED  
 CO4778R - (X) = 19" - (2) DOORS RH & LH HINGED  
 CO5978R - (X) = 19 5/8" - (2) DOORS RH & LH HINGED  
 CO7178R - (X) = 30" - (2) DOORS RH & LH HINGED



"D1"	Solid Back	Rear Doors
Flat Front	33 1/4"	35 1/8"
Curved Front	35"	36 7/8"

\*SELF-CONTAINED MODELS CO3678R & CO4778R  
 SERVICE ACCESS AREAS ONLY ACCESSIBLE  
 BY PULLING OUT COMPRESSOR UNIT

NOTE: ALL DIMENSIONS APPROXIMATE

- ELECTRICAL JUNCTION BOX (SUPPLIED WITH 6" LEADS OR POWER CORD).
- REFRIGERATION LINE CONNECTION.
- SELF-CONTAINED CASE SERVICE ACCESS AREA.
- REMOTE CASE SERVICE ACCESS AREA.
- DRY CASE SERVICE ACCESS AREA.
- LOCATION OF CONDENSATE DRAIN TUBE (SUPPLIED WITH 3/4" OR 1/2" PVC DRAIN TUBE).

Standard Refrigeration (based on Type I conditions: 75°F, 55% Relative Humidity)												
Model	Self-Contained Refrigeration/Dry						Remote Refrigeration w/Leads					
	L1*	L2*	Volts++	Amps (std lights)	Amps (LED lights)	NEMA Plug	Volts	Amps (std lights)***	Amps (LED lights)***	BTUH	Ship Wt	Frt Cls
CO3678R	36 1/4	5 1/8	120/1/60	17.59	16.41	NEMA 5-20 P	120/1/60	3.38	2.2	5306	960	110
CO4778R	47 1/4	11	220/1/60**	16.53	15.35	NEMA 14-20 P	120/1/60	2.93	1.75	7990	1150	110
CO5978R	59 1/4	22 1/2	220/1/60**	16	15.34	NEMA 14-20 P	120/1/60	3.5	2.84	9360	1350	110
CO7178R	71 1/4	18 1/2	220/1/60**	22.07	20.21	NEMA 14-30 P	120/1/60	7.44	5.58	11042	1550	110

Breeze-E Refrigeration (based on Type II conditions: 80°F, 60% Relative Humidity)****												
Model	Self-Contained Refrigeration/Dry						Remote Refrigeration w/Leads					
	L1*	L2*	Volts++	Amps (std lights)	Amps (LED lights)	NEMA Plug	Volts	Amps (std lights)***	Amps (LED lights)***	BTUH	Ship Wt	Frt Cls
CO3678R	36 1/4	5 1/8	220/1/60**	15.25	14.07	NEMA 14-20 P	120/1/60	3.38	2.2	5306	960	110
CO4778R	47 1/4	11	220/1/60**	16.95	15.77	NEMA 14-20 P	120/1/60	2.93	1.75	7990	1150	110
CO5978R	59 1/4	22 1/2	220/1/60**	22.02	21.36	NEMA 14-30 P	120/1/60	3.5	2.84	9360	1350	110
CO7178R	71 1/4	18 1/2	220/1/60**	23.6	21.74	NEMA 14-30 P	120/1/60	7.44	5.58	11042	1550	110

EnergyWise Refrigeration (based on Type I conditions: 75°F, 55% Relative Humidity)												
Model	Self-Contained Refrigeration/Dry						Remote Refrigeration w/Leads					
	L1*	L2*	Volts++	Amps (std lights)	Amps (LED lights)	NEMA Plug	Volts	Amps (std lights)***	Amps (LED lights)***	BTUH	Ship Wt	Frt Cls
CO3678R	36 1/4	5 1/8	120/1/60	11.3	10.12	NEMA 5-20 P	120/1/60	3.38	2.2	5306	960	110
CO4778R	47 1/4	11	220/1/60**	11.47	10.29	NEMA 14-20 P	120/1/60	2.93	1.75	7990	1150	110
CO5978R	59 1/4	22 1/2	220/1/60**	13.37	12.71	NEMA 14-20 P	120/1/60	3.5	2.84	9360	1350	110
CO7178R	71 1/4	18 1/2	220/1/60**	15	13.14	NEMA 14-20 P	120/1/60	7.44	5.58	11042	1550	110

++Operating range for 120 volt rating is 110-120 volts; operating range for 220 volt rating is 208-230 volts.

\*\* Requires 3 wires + ground

\*\*\* Does not include electric defrost on freezer models

\*\*\*\* Energy consumption will be less under Type I conditions; Example: 10% Less on CO5978R

#### REGULATORY APPROVALS

- ETL Listed Certified to CAN/CSA 22.2
- ETL Sanitation Conforms to NSF 7
- ETL Listed Conforms to UL 471
- Rated in Accordance with ARI Standard 1200

#### Important Note:

Compressor air ventilation is out the rear. Unit must remain 4" from wall and front panel cannot be blocked. Product temperature will be affected if the air curtain is disrupted.

#### Important Note:

Unit includes 3 1/8" removable spacers along the rear. 40 1/4" minimum door entry clearance required (w/out shipping skid). 37 7/8" minimum door entry required if spacers are removed.